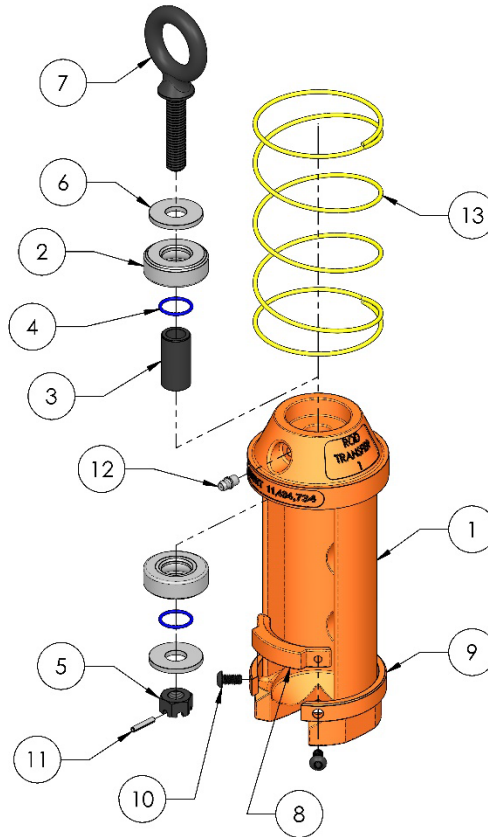


PETOL™ SUCKEROD TRANSFER – QTXS (with spring) Parts List



Item	Qty.	Part Number	Description
*1A	1	QB1	Body, 5/8" sucker rod (for QT1)
*1B	1	QB2	Body, 3/4" & 7/8" sucker rod (for QT2)
*1C	1	QB2R	Body, 7/8" EL sucker rod (for QT2R)
*1D	1	QB4	Body, 1" sucker rod (for QT4)
*1E	1	QB5	Body, 1-1/8" sucker rod (for QT5)
2	2	HXB01	Thrust bearing
3	1	HU03	Bushing
4	2	HXOR02	O-ring
5	1	HXN009	Slotted nut only
6	2	HXW016	Flat washer only
7	1	HXS054	Eyebolt with washers, nut and spring pin
8A	1	QI1L	Safety ring segment (for QT1, QT2, & QT2R)
8B	1	QI5A	Safety ring segment (for QT4 & QT5)
9A	1	QO1L	Outer safety ring (for QT1, QT2, & QT2R)
9B	1	QO5A	Outer safety ring (for QT4 & QT5)
10	2	HXS133	Safety ring screw
11	1	HXP007	Slotted spring pin only
12	1	HXG006	Grease fitting
13A	1	HS37P	Spring (for QT1, QT2, & QT2R)
13B	1	HS38P	Spring (for QT4 & QT5)

*Transfer bodies are not available as individual components.

QTX-KIT Repair Kit	
Item	Qty.
2	2
3	1
4	2
5	1
6	2
7	1
11	1
12	1

QTRK1 Ring Kit	
Item	Qty.
8A	1
9A	1
10	2

QTRK5 Ring Kit	
Item	Qty.
8B	1
9B	1
10	2



4450 S. Hwy. 6 | P.O. Box 192
Clifton, TX 76634 | USA
www.PETOL.com

sales@petol.com | 254.675.8651