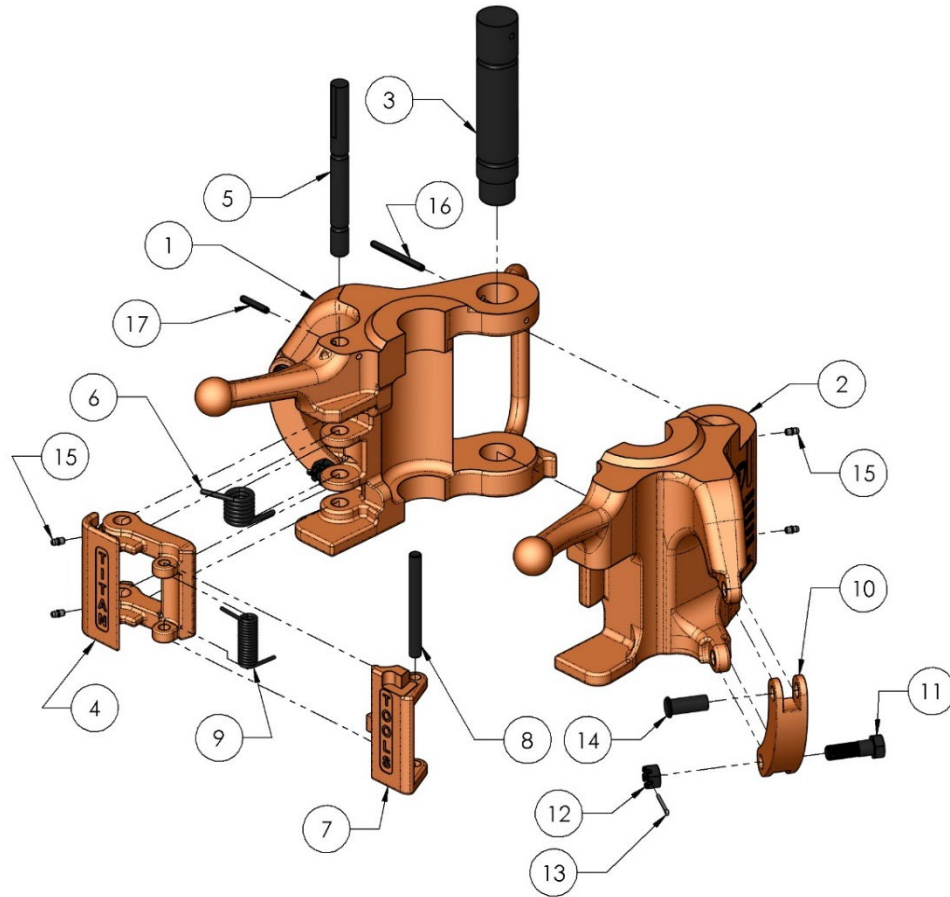


# TITAN™ TUBING ELEVATOR – TEA100 Parts List



ITEM	QTY	PART NUMBER	DESCRIPTION
*1	1	TEL100	Left body
*2	1	TER100	Right body
3	1	HP418	Hinge pin w/spring pin
4	1	TEN100	Retainer
5	1	HP419	Retainer pin w/spring pin
6	1	HS31	Retainer spring
7	1	TEK100	Lock
8	1	HP420	Lock pin
9	1	HS30	Lock spring
10	2	BDT100	Tie bar
11	2	HXS039	Tie bar bolt, nut & cotter pin
12	2	HXN060	Tie bar nut only
13	2	HXC008	Tie bar cotter pin only
14	2	HP396	Tie bar rivet
15	4	HXG006	Grease fitting
16	1	HXP010	Spring pin only (for HP418)
17	1	HXP013	Spring pin only (for HP419)

\*Left and right elevator bodies are not available as individual components.



4450 S. Hwy. 6 | P.O. Box 192  
Clifton, TX 76634 | USA  
[www.PETOL.com](http://www.PETOL.com)

[sales@petol.com](mailto:sales@petol.com) | 254.675.8651