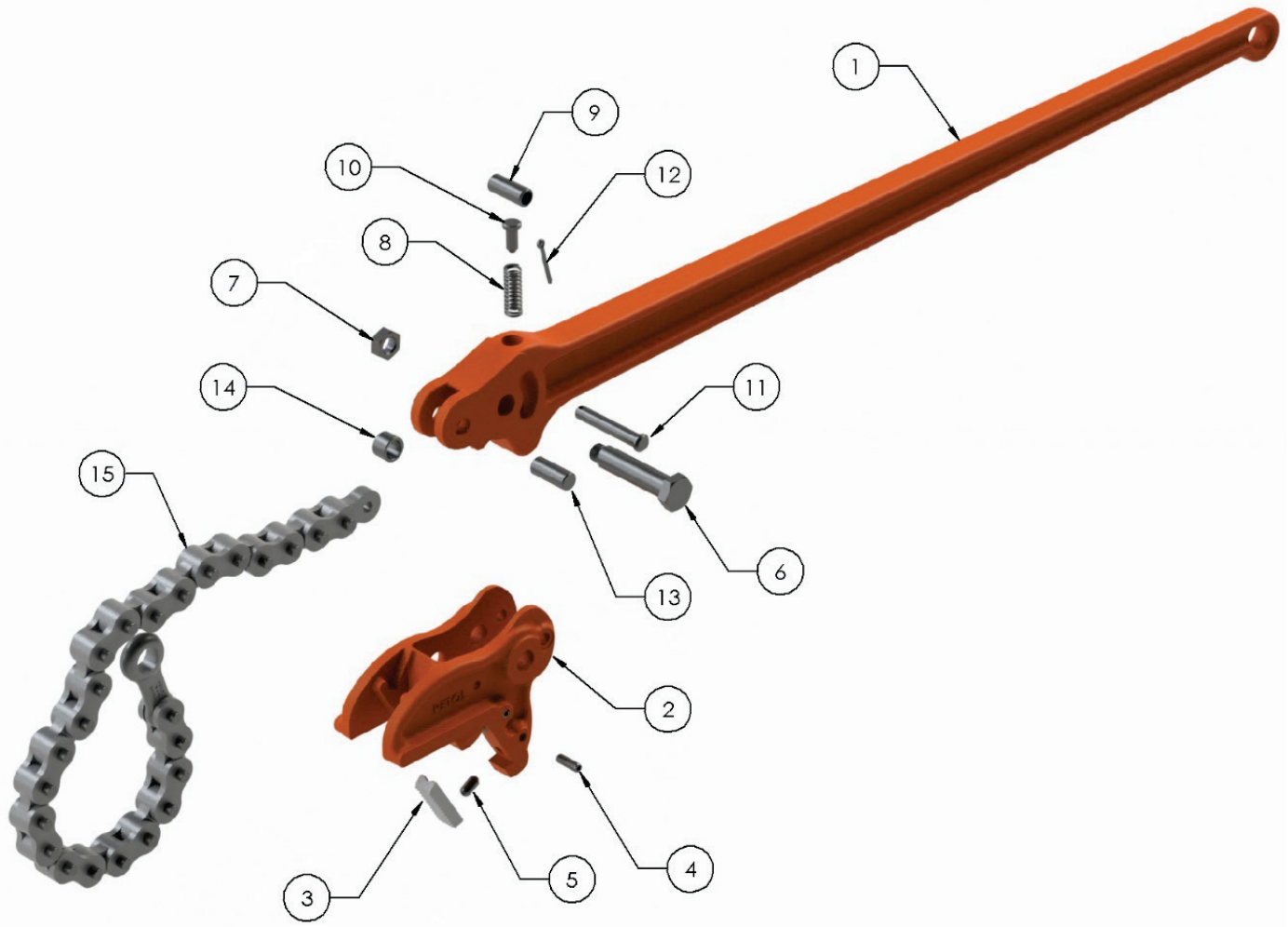


PETOL® CHAIN TONG – CPA13 Parts List



| Item | Qty. | Part Number | Description |
|------|------|-------------|---------------------------------|
| 1 | 1 | CPH13 | Handle |
| 2 | 1 | CPJ13 | Jaw |
| 3 | 2 | HI20T | Tooth insert |
| 4 | 4 | HP219 | Insert key pin |
| 5 | 4 | HP908 | Insert key |
| 6 | 1 | HB06 | Jaw – handle bolt with nut |
| 7 | 1 | HXN021 | Jaw – handle bolt nut only |
| 8 | 1 | HS06 | Jaw spring |
| 9 | 1 | HU31 | Jaw spring bushing |
| 10 | 1 | HG03 | Jaw spring guide |
| 11 | 1 | HP211 | Jaw spring pin with cotter |
| 12 | 1 | HXC002 | Spring pin cotter only |
| 13 | 1 | HP203 | Chain – handle pin |
| 14 | 1 | HU44 | Chain – handle bushing |
| 15 | 1 | C132-P | Chain assembly with master link |



4450 S. Hwy. 6 | P.O. Box 192
Clifton, TX 76634 | USA
www.PETOL.com

sales@petol.com | 254.675.8651