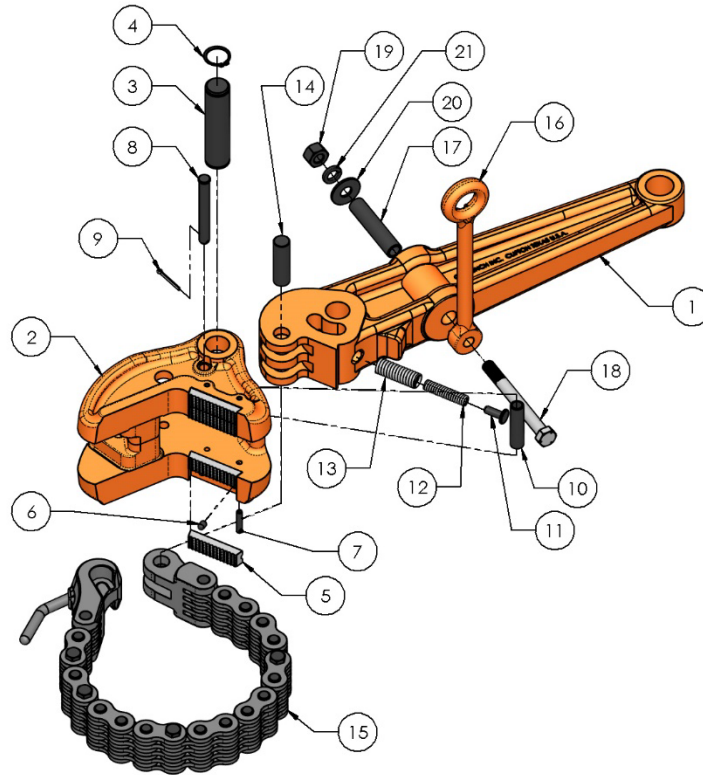


PETOL™ BULL TONG – LA116-23 Parts List



| Item | Qty. | Part Number | Description |
|------|------|-------------|--|
| | 1 | LH116-23 | Handle |
| 2 | 1 | LJ116 | Jaw |
| 3 | 1 | HP249 | Jaw-handle pin with retaining ring |
| 4 | 2 | HXRR150 | Jaw-handle retaining ring only |
| 5 | 4 | HI05K | Knurled insert |
| 6 | 8 | HP905 | Insert key |
| 7 | 4 | HP251 | Insert key pin |
| 8 | 1 | HP250 | Spring pin with cotter |
| 9 | 1 | HXC003 | Spring pin cotter only |
| 10 | 1 | HU36 | Spring pin bushing |
| 11 | 1 | HG09 | Spring guide |
| 12 | 1 | HS09 | Spring (inside) |
| 13 | 1 | HS18 | Spring (outside) |
| 14 | 1 | HP234 | Master link – handle pin |
| 15 | 1 | * | Chain assembly (see next page for parts) |
| 16 | 1 | HH16 | Hanger |
| 17 | 1 | HU49 | Hanger bushing |
| 18 | 1 | HB19 | Hanger bolt with nut |
| 19 | 1 | HXN023 | Hanger nut only |
| 20 | 1 | HXW001 | Hanger flat washer |
| 21 | 1 | HXW002 | Hanger lock washer |

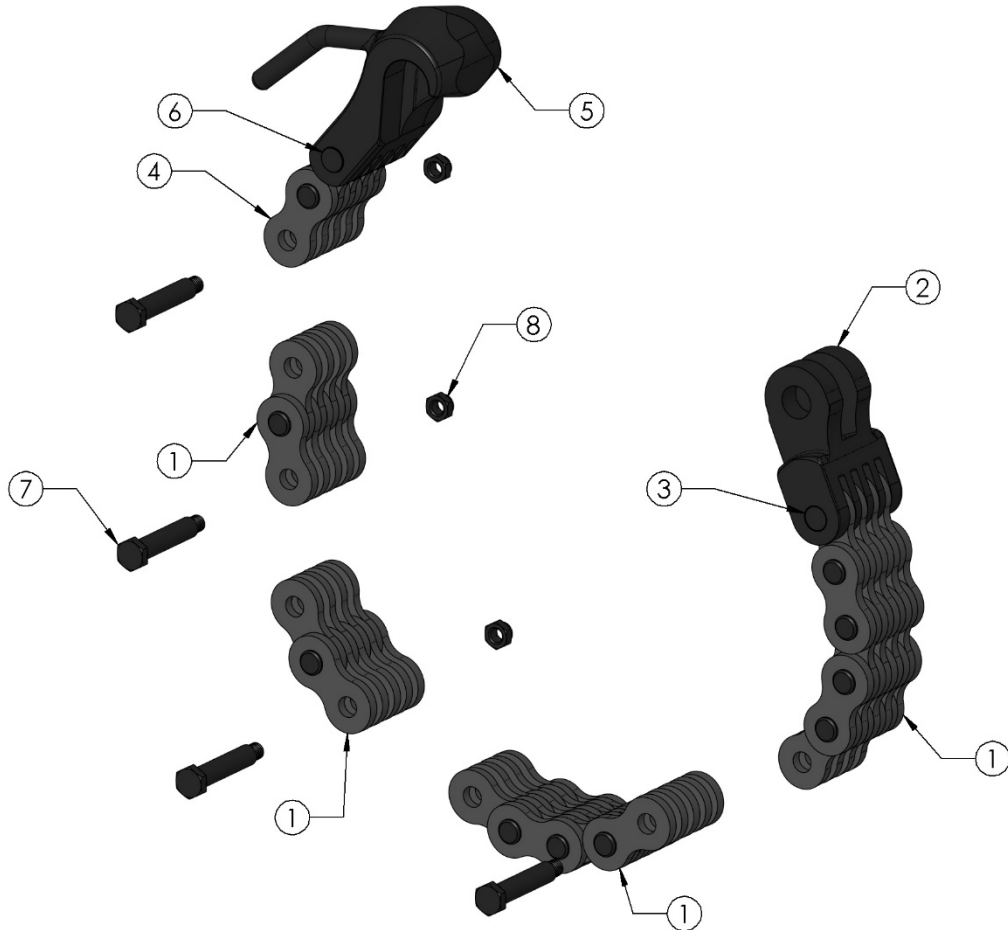
*See Chain Guide on product web page



4450 S. Hwy. 6 | P.O. Box 192
Clifton, TX 76634 | USA
www.PETOL.com

sales@petol.com | 254.675.8651

PETOL™ BULL TONG – LA116-23 Parts List



| Item | Part No. | Description |
|------|----------------|---------------------------|
| 1 | 161-45-02 | Special chain only |
| 1 | 161-45-03 | Special chain only |
| 1 | 161-45-04 | Special chain only |
| 1 | 161-45-05 | Special chain only |
| 1 | 161-45-06 | Special chain only |
| 1 | 161-45-07 | Special chain only |
| 1 | 161-45-08 | Special chain only |
| 2 | HM06-45 | Master link |
| 3 | HP247 | Master link – chain rivet |
| 4 | 161-45-02-4500 | Chain hook assembly |
| 4 | 161-45-02-5375 | Chain hook assembly |
| 4 | 161-45-02-6250 | Chain hook assembly |
| 5 | HC01-45-4500 | Chain hook only |
| 5 | HC01-45-5375 | Chain hook only |
| 5 | HC01-45-6250 | Chain hook only |
| 6 | HP247 | Chain hook rivet |
| 7 | HB52 | Splice bolt with nut |
| 8 | HXN016 | Splice bolt nut only |



4450 S. Hwy. 6 | P.O. Box 192
Clifton, TX 76634 | USA
www.PETOL.com

sales@petol.com | 254.675.8651