

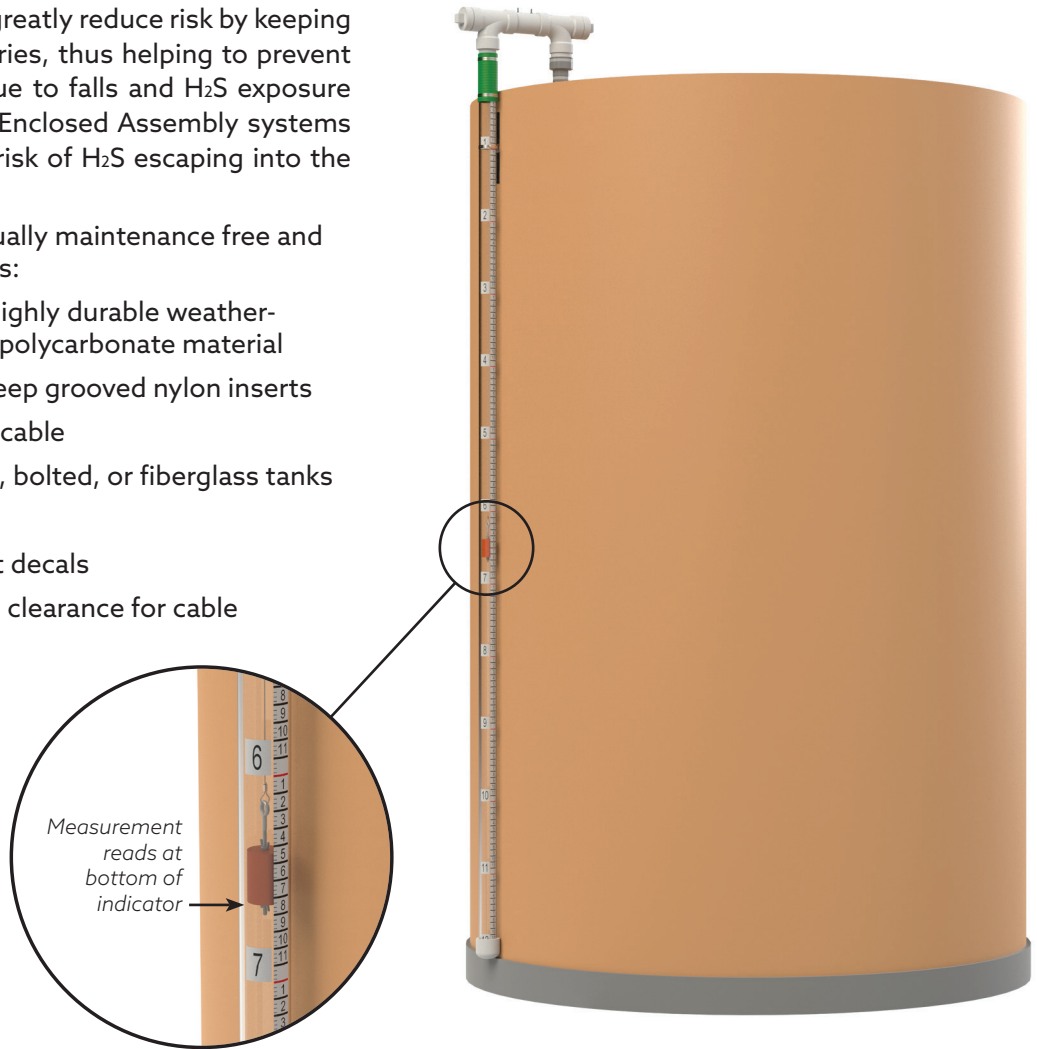
PETOL™ Tank Safety Gauges

– Easy to install tank level gauging systems –

PETOL™ TANK SAFETY GAUGES greatly reduce risk by keeping lease operators off of tank batteries, thus helping to prevent injuries and accidental deaths due to falls and H₂S exposure when checking tank fluid levels. Enclosed Assembly systems are fully enclosed, reducing the risk of H₂S escaping into the environment.

All systems are accurate and virtually maintenance free and include the following components:

- » Gauge body produced from highly durable weather-resistant, clear UV protected polycarbonate material
- » Stainless steel pulleys with deep grooved nylon inserts
- » Nylon coated, stainless steel cable
- » Tank attachments for welded, bolted, or fiberglass tanks
- » Custom stainless steel floats
- » Reflective vinyl measurement decals
- » Nylon tank plug with minimal clearance for cable



(see back for specifications and mechanism illustrations)

For more information,
visit www.PETOL.com

254.675.8651 | sales@petol.com | Clifton, Texas

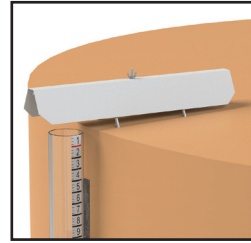
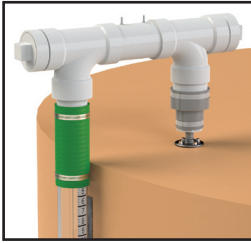
– ISO9001 Quality System Certified –



LEGENDARY RELIABILITY
SINCE 1927

Specifications

PETOL™ Tank Safety Gauges



Enclosed Assembly Systems

Part No.	Tank Height
TSG8-EA	8'
TSG10-EA	10'
TSG11-EA	11'
TSG12-EA	12'
TSG15-EA	15'
TSG16-EA	16'
TSG18-EA	18'
TSG20-EA	20'
TSG24-EA	24'
TSG25-EA	25'
TSG28-EA	28'
TSG30-EA	30'

Standard Hut Systems

Part No.	Tank Height
TSG6	6'
TSG8	8'
TSG10	10'
TSG11	11'
TSG12	12'
TSG1212	12-1/2'
TSG15	15'
TSG16	16'
TSG18	18'
TSG20	20'
TSG24	24'
TSG25	25'
TSG28	28'
TSG30	30'

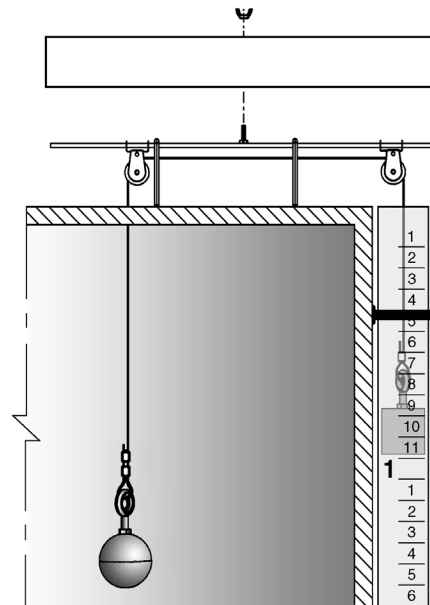
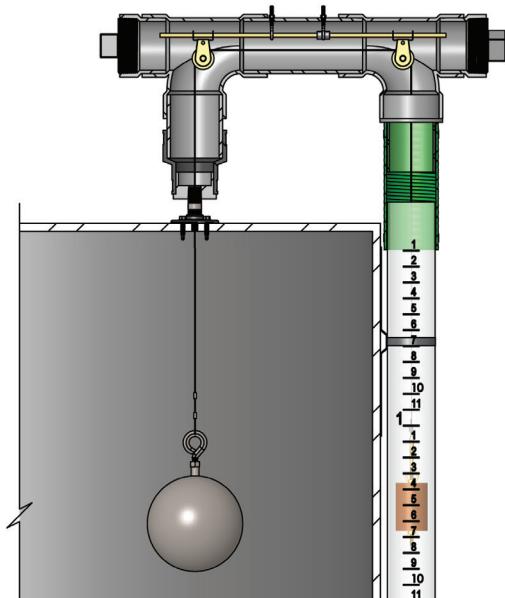
Enclosed Hut Systems

Part No.	Tank Height
TSG6-EH	6'
TSG8-EH	8'
TSG10-EH	10'
TSG11-EH	11'
TSG12-EH	12'
TSG1212-EH	12-1/2'
TSG15-EH	15'
TSG16-EH	16'
TSG18-EH	18'
TSG20-EH	20'
TSG24-EH	24'
TSG25-EH	25'
TSG28-EH	28'
TSG30-EH	30'

Note: Standard hut systems are open at each end; Enclosed hut systems are covered at each end and are recommended for winter climates with blowing snow conditions

Enclosed Assembly Systems have a fully enclosed PVC housing for the pulley mechanism which reduces the risk of H₂S escaping into the environment

Hut Systems have a stainless steel, low-profile A-frame with coated heavy gauge metal housing covering the pulley mechanism



Note: Larger systems available upon request.

>>> **RETROFIT KITS** are available to convert from a Hut System to an Enclosed Assembly System <<<