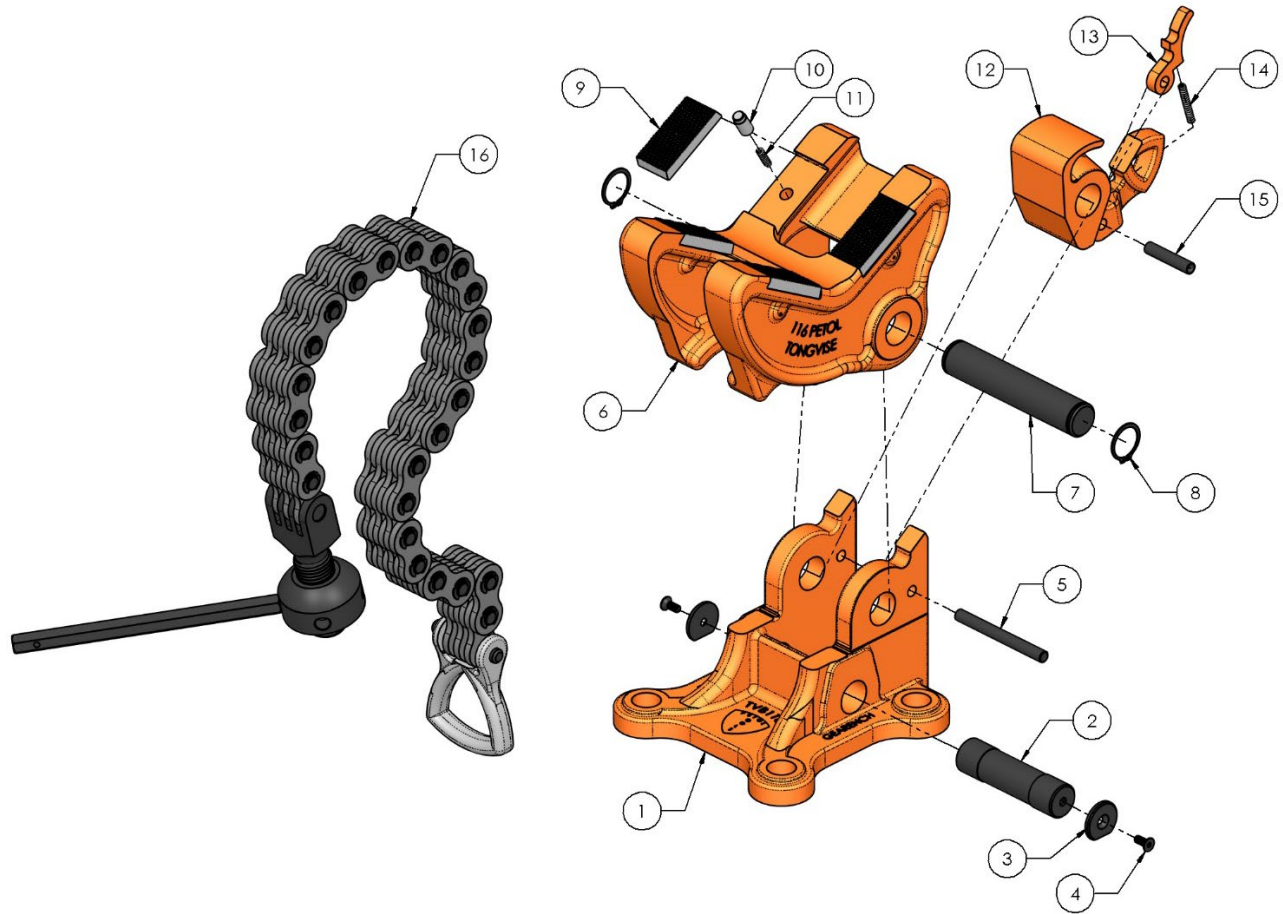


PETOL™ TONGVISE – TVA116 Parts List



Item	Qty.	Part Number	Description
1	1	TVB116	Base
2	1	HP339	Base lock pin
3	2	HP339-RP	Lock pin retaining plate
4	2	HXS090	Retaining plate screw
5	1	HP298	Pawl latch pin
6	1	TVJ116	Jaw
7	1	HP293	Base – jaw pin with retaining rings
8	2	HXRR150	Jaw pin retaining ring only
9	4	HI09D	Diamond point insert (standard)
9		HI09K	Knurled insert (optional)
10	4	HP904	Insert key
11	4	HS21	Insert key spring
12	1	TVP116	Pawl
13	1	TVL116	Pawl latch
14	1	HS25	Pawl latch spring
15	1	HP050	Pawl latch rivet
16	1	*	Chain assembly (see next page for parts)

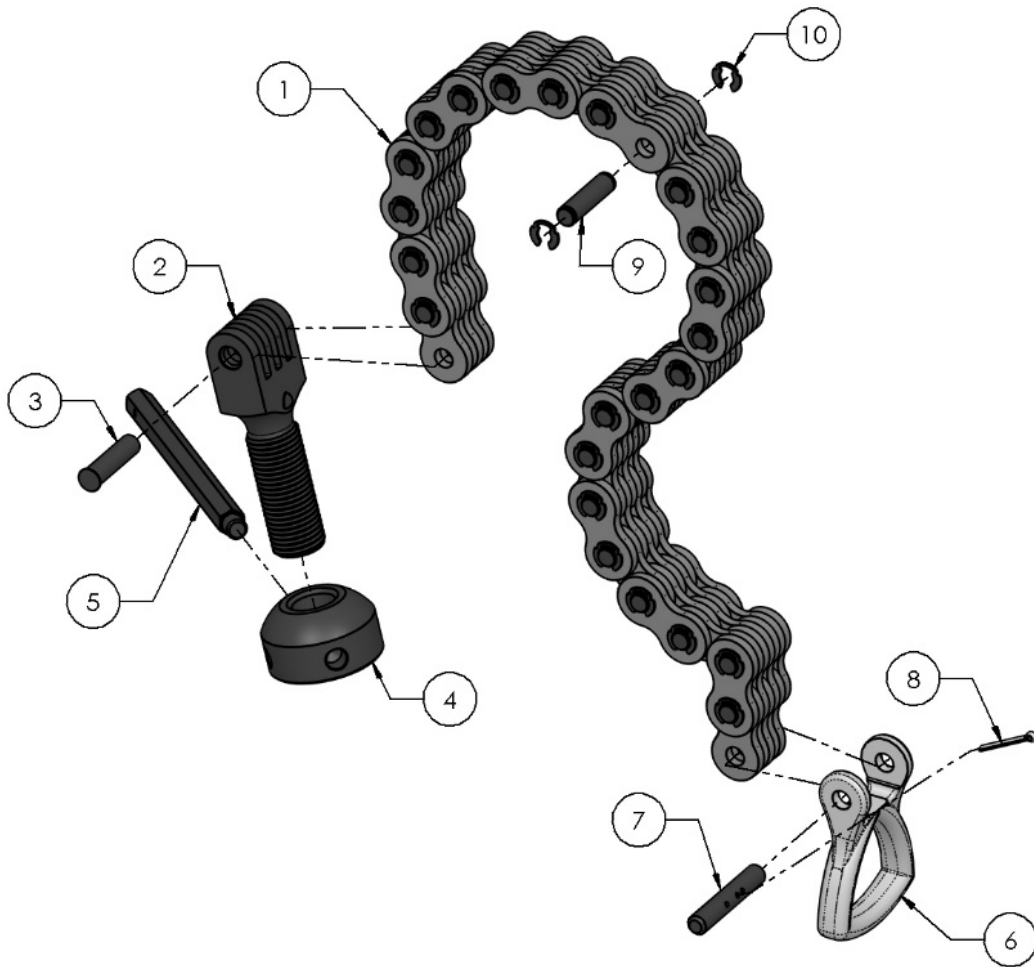
*See Chain Guide on product web page



4450 S. Hwy. 6 | P.O. Box 192
Clifton, TX 76634 | USA
www.PETOL.com

sales@petol.com | 254.675.8651

PETOL™ TONGVISE – TVA116 Parts List



Item	Part No.	Description
1	161-34-02K	Special chain only
1	161-34-03K	Special chain only
1	161-34-04K	Special chain only
1	161-34-05K	Special chain only
1	161-34-07K	Special chain only
2	HV03-34	Chain screw
3	HP246	Chain screw rivet
4	HN06	Chain screw nut
5	HP952	Chain nut lever
6	HD6-34	Chain handle
7	HP282	Chain handle pin with cotter
8	HXC003	Chain handle pin cotter only
9	HP330	Chain pin with kliplings
10	HXKR062	Chain pin klipring only



4450 S. Hwy. 6 | P.O. Box 192
 Clifton, TX 76634 | USA
www.PETOL.com

sales@petol.com | 254.675.8651