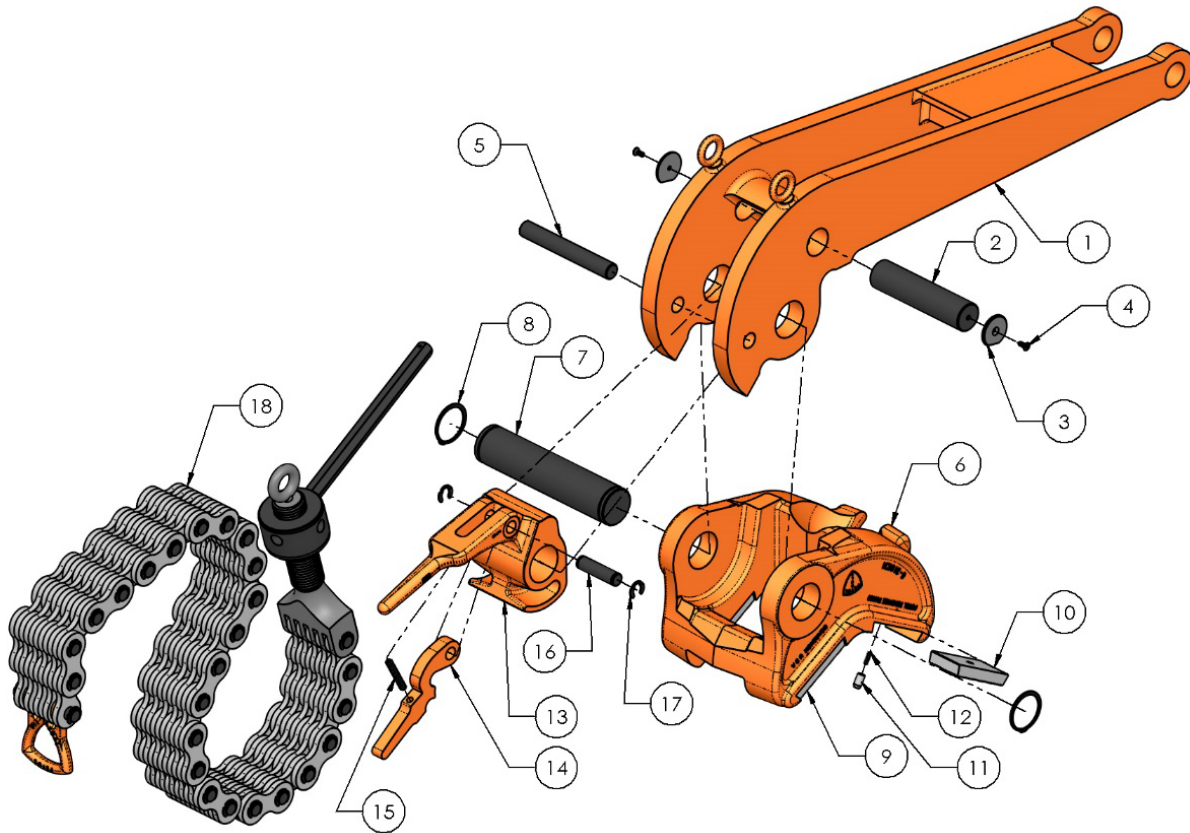


# PETOL™ PUSHUP VISETONG – VTUA120 Parts List



Item	Qty.	Part Number	Description
1	1	VTUH120	Handle
2	1	HP222	Handle lock pin
3	2	HP279-RP	Lock pin retaining plate
4	2	HXS090	Retaining plate screw
5	1	HP344	Pawl latch pin
6	1	TVJ120	Jaw
7	1	HP345	Handle – jaw pin with retaining rings
8	2	HXRR300	Jaw pin retaining ring only
9, 10	4	HI11D	Diamond point insert (standard)
9, 10		HI11K	Knurled insert (optional)
10		HI11B	Blank insert (optional)
11	4	HP904	Insert key
12	4	HS21	Insert key spring
13	1	TVP120	Pawl
14	1	TVL120	Pawl latch
15	1	HS03	Pawl latch spring
16	1	HP029	Pawl latch pin with kliprings
17	2	HXKR100	Pawl latch pin klipring only
18	1	*	Chain assembly (see next page for parts)

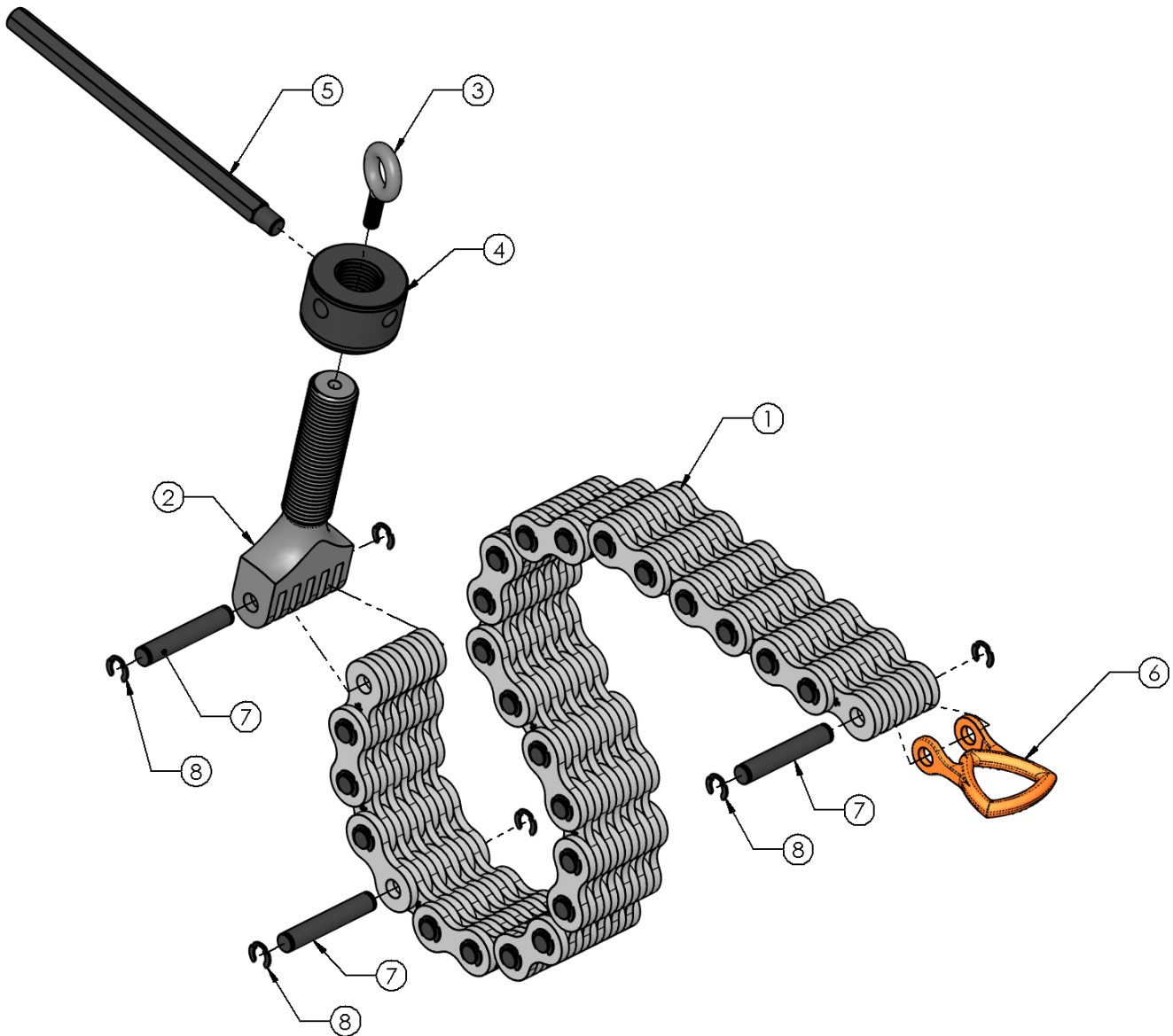
\*See Chain Guide on product web page



4450 S. Hwy. 6 | P.O. Box 192  
Clifton, TX 76634 | USA  
www.PETOL.com

sales@petol.com | 254.675.8651

# PETOL™ PUSHUP VISETONG – VTUA120 Parts List



Item	Part No.	Description
1	201-56-02	Special chain only
1	201-56-03	Special chain only
1	201-56-05	Special chain only
1	201-56-07	Special chain only
2	HV06-56	Chain screw
3	HB66	Eye bolt
4	HN07	Chain screw nut
5	HP955	Chain nut lever
6	HD5-56	Chain handle
7	HP328	Chain pin with kliprings
8	HXKR100	Chain pin klipring only



4450 S. Hwy. 6 | P.O. Box 192  
Clifton, TX 76634 | USA  
[www.PETOL.com](http://www.PETOL.com)

[sales@petol.com](mailto:sales@petol.com) | 254.675.8651